

# DAYCO QUALITY

Dayco's comprehensive range of wheel bearing kits provide complete solutions for the workshop. Particular focus has been paid to ensure that all necessary mounting accessories are provided in the kit. Whilst the range of kits ensure a wide coverage of the European car fleet it is also aimed at providing solutions for niche applications. Particular attention has been paid to Asian vehicles, for which Dayco now boasts one of the widest ranges available on the market today.

# WHEEL BEARING KIT WITH SENSORS

Depending on the specific requirements of the vehicle, some sensors are integrated into the wheel bearing. This integration brings advantages in terms of reliability, lightness and ease of installation. The sensors can be both passive and active:

## PASSIVE SENSORS

- Simple yet reliable
- Used in ABS and ESP applications
- Able to transmit the signal for speeds ranging from a few miles per hour to the top speed of the vehicle
- They are mainly present in the second generation bearing hubs

## ACTIVE SENSORS

- Also suitable for Traction Control and GPS applications
- They can perceive the slightest movement of the vehicle or even when it is stationary
- They provide a precise signal linked to the rotation of the wheel and a better functioning of all the systems using it.

# DAYCO TECHNOLOGY

Wheel bearings that include sensors, utilise Dayco technology for signal transmission. This guarantees full compatibility and functionality of the sensors used with the vehicle ECUs controlling the specific functions within the vehicle. Here are some examples:



## ABS

Prevents the wheels from locking during emergency braking which reduces the braking distance's while maintaining direction control.



## ESP

Allows the vehicle to remain stable in the event of tyre grip loss on the road (slip).



## SPEED

Allows the computer to interpret and display the precise speed of the vehicle.



## UPHILL DEPARTURE

Prevents the vehicle rolling backwards when on an uphill slope.



## GPS

Allows GPS systems to track the position of the vehicle when satellite single is lost (tunnels).



## ASR

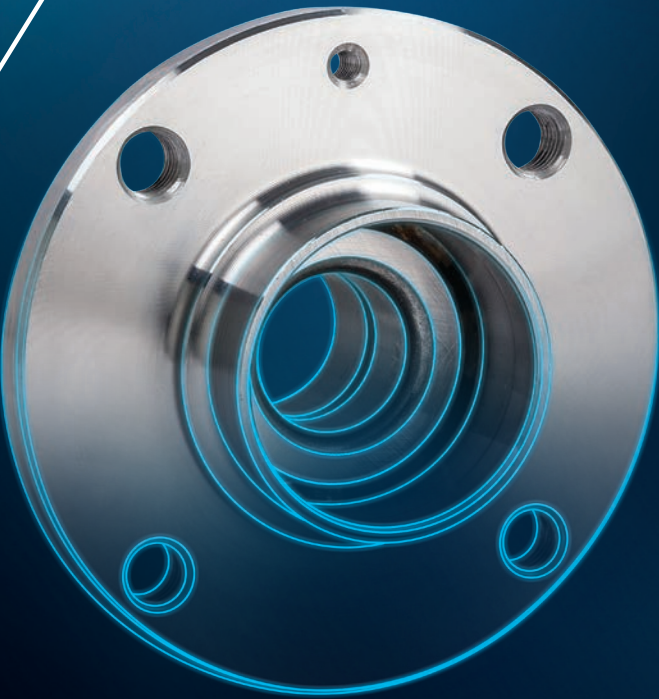
Improves the vehicle's directionality and manoeuvrability during acceleration and/or cornering.

018535

www.dayco.com



# WHEEL BEARING KITS



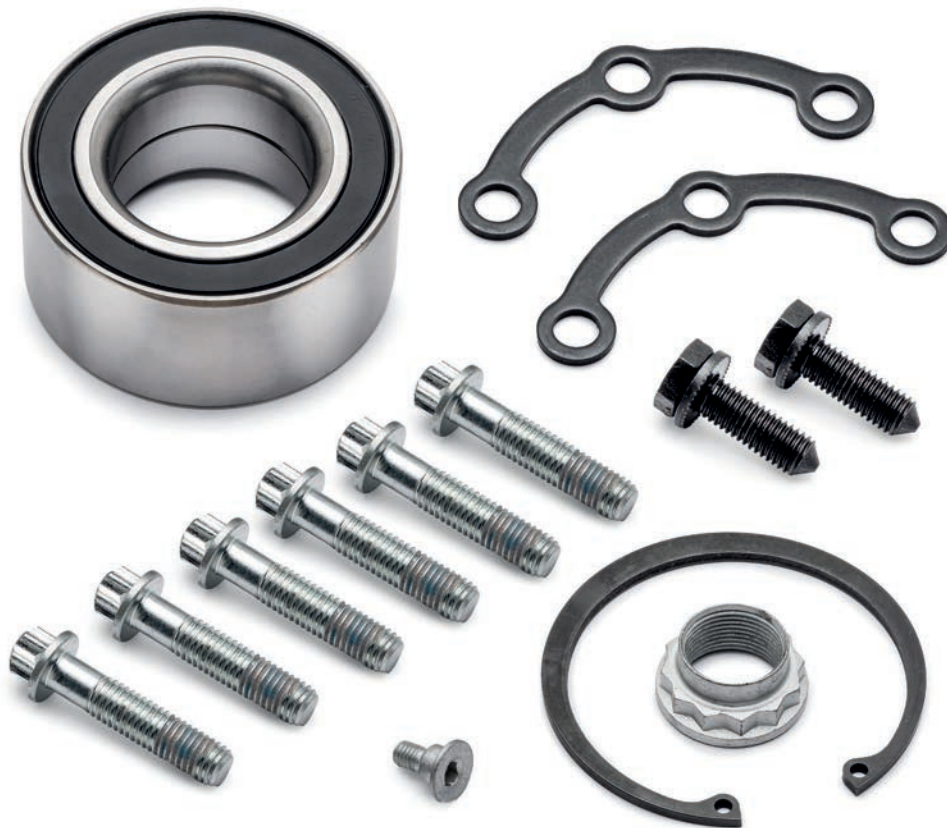
# DAYCO WHEEL BEARING KITS

Dayco with its long history in the design, development and production of mechanical components for power transmission, cooling systems and chassis applications, continues to create and bring to market innovative solutions for the automotive sector. High-tech products such as the VGS (Vacuum Generation System) for the braking circuit and a range of wheel bearing kits continue this history. All products undergo severe validation testing to ensure that they meet all the Original Equipment standards and high quality requirements expected by Dayco.



# ACCESSORIES

Dayco wheel bearing kits are supplied with all the necessary nuts, bolts, pins, retainers, snap rings, oil seals needed for quick and safe installation.





# TIGHTENING TORQUE

Excessive tightening torque can result in premature failure of the bearing resulting in damage to the vehicle; likewise, too low a torque can cause safety problems. For this reason Dayco always recommends that the manufacturer's fitting instructions are followed and that torque wrenches are used for this operation, Dayco provides the mounting torque value for much of its range of wheel bearing kits, please visit [www.dayco.com](http://www.dayco.com)



## GENERATION 1

- They are traditional double row bearings, historically replacing single row bearings.
- Simple and extremely reliable technology.
- They do not need any setting, such as preload or alignments, thus simplifying their replacement.
- They are supplied with all the necessary accessories for trouble-free installation.
- In order to minimise rolling friction and maximise service life only the latest generation of greases are used, this guarantee's constant performance in all conditions.



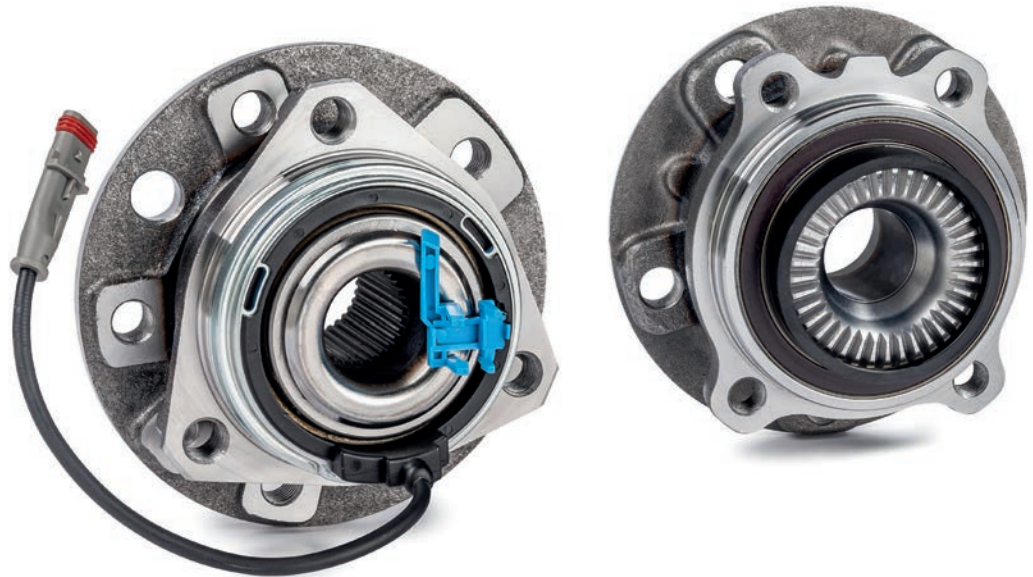
## GENERATION 2

- Bearings, flanges and clamps are integrated into one hub unit with the advantage of weight reduction and ease of installation on the vehicle chassis.
- They have contributed over the years to the reduction of fuel consumption and CO2 emissions.
- As with the Generation 1 units, high performance and durability bearings are used.



## GENERATION 3

- They are the latest and most sophisticated in our range, integrating two assembly functions: assembly to the wheel unit and fixing of the brake disc and wheel.
- In some versions, drive is also transmitted to the wheels via the spline in the bore the unit.
- Service sensors are also fitted when specified by the vehicle manufacturer.
- Ease of assembly is guaranteed thanks to the factory set preload.



# BRAKE DISC INTEGRATED WITH WHEEL BEARINGS

- The bearing is inserted into the brake disc directly in the production plants.
- The fitting of the single bearing is a complex operation and involves high tolerances; in many cases it is impossible to replace only the bearing, hence the need to replace the complete disc with integrated bearing.
- A fundamental requirement is that discs should always be replaced in pairs.

